



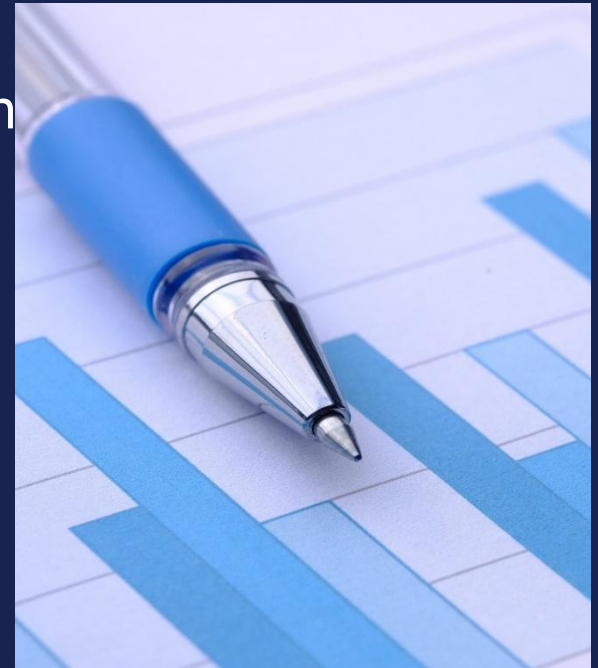
TEXAS
Health and Human
Services

Data and Suicide Prevention: A Statewide Update

Jennifer Haussler Garing, MS
Office of Mental Health Coordination
Texas Health and Human Services
June 13, 2023

Overview

- Data Interpretation
 - Review of Relevant Terms
 - Key Points for Interpreting Data
- Statewide Suicide Prevention Data
 - Mortality Data
 - Hospitalization Data
 - Texas Poison Control Network Data
 - Youth Risk Behavior Survey Data
 - Behavioral Risk Factor Surveillance System Data



TEXAS
Health and Human
Services

Review of Relevant Terms

- Mortality – Death
- Mortality rate - calculated by dividing the number of deaths in a population by the number of people in that population and multiplying by 100,000
- Morbidity - sickness, such as ideation, hospitalizations, ED visits, or attempts as it relates to suicide
- Suppression – a method of protecting the confidentiality of individuals through the masking of data, protected by law in many cases



TEXAS
Health and Human
Services

Overview of Data Interpretation

- Higher is worse, lower is better
- Rates can be compared, numbers cannot
- Two data points do not make a trend
- Census vs. sample
- Bias and/or self selection
- Anecdotal vs. generalizable
- Weighting data
- Statistical significance
- Correlation vs. causality



TEXAS
Health and Human
Services

Texas Suicide Mortality

National Center for Health Statistics at the CDC

- Data is available yearly, with a two-year delay.
- All death certificates in Texas residents where suicide is the manner of death.
- In 2019 and 2020, Texas rates remained the same at 13.4 deaths per 100,000 population
- The 2021 rate increased to 14.2 deaths per 100,000 population.
- Looking at rates by sex, simple urbanization, and race and ethnicity.

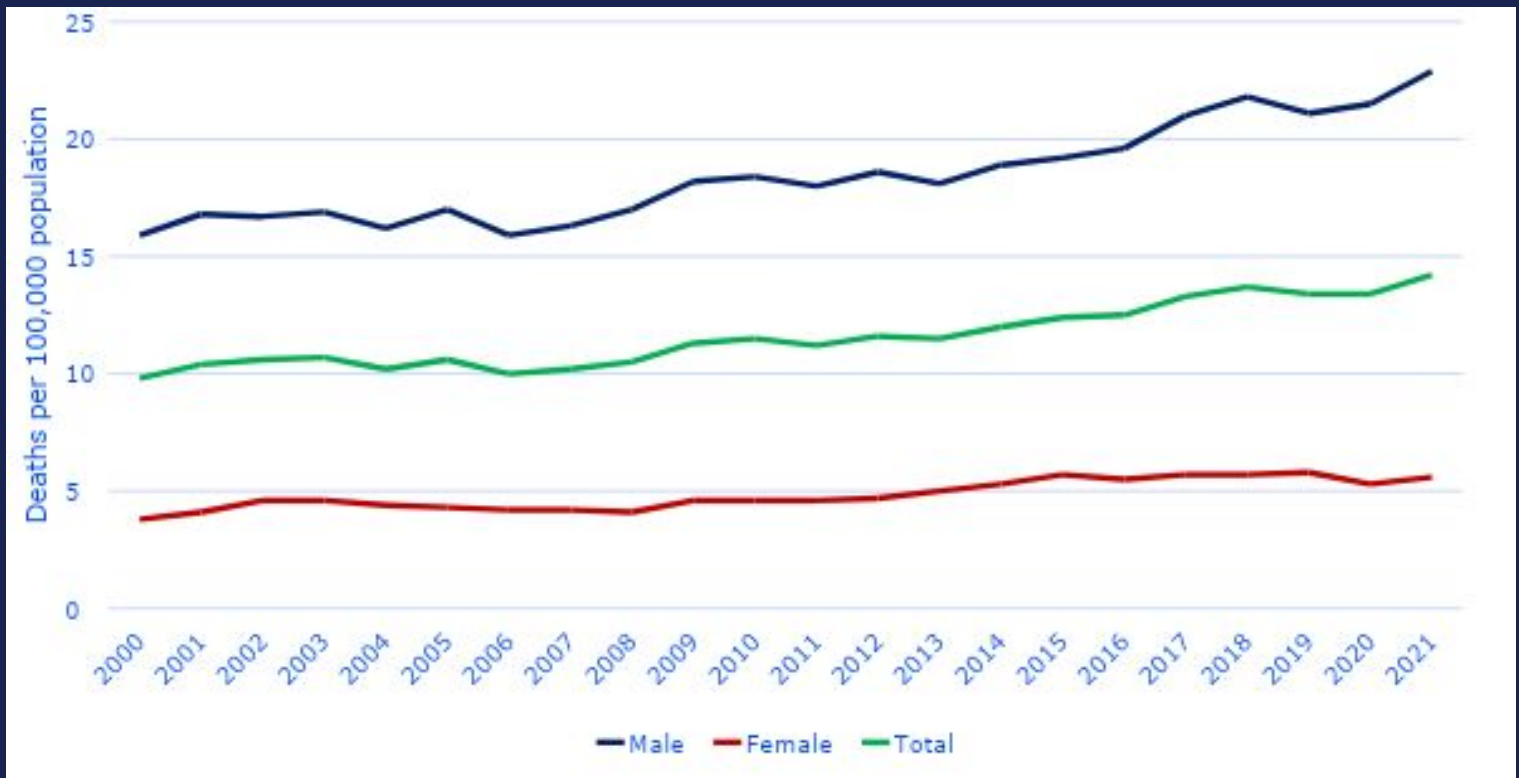


TEXAS
Health and Human
Services

Texas Suicide Mortality by Sex, 2000-2021



TEXAS
Health and Human
Services

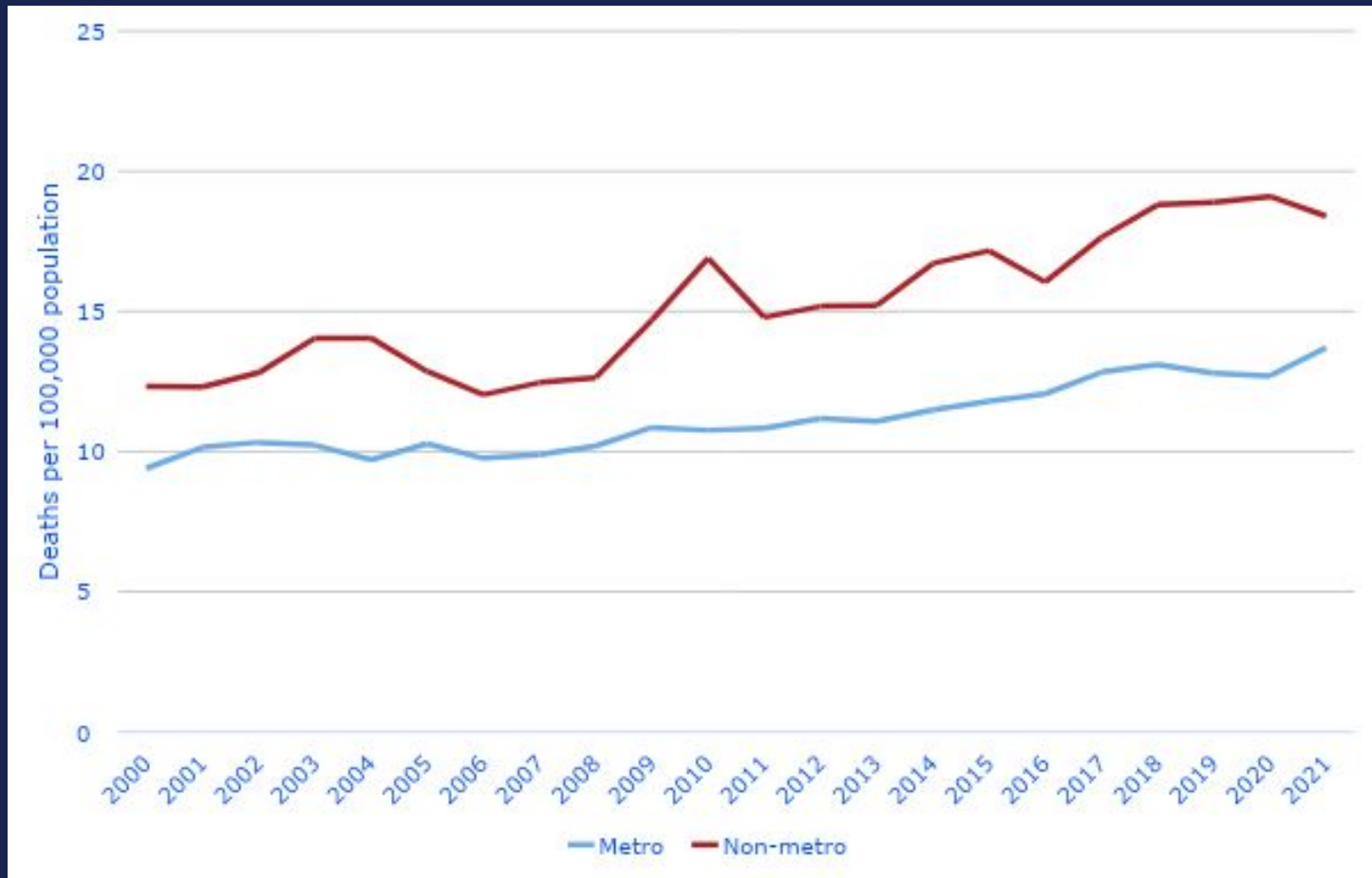


Source: CDC WONDER

Texas Suicide Mortality by Urbanization, 2000-2021



TEXAS
Health and Human
Services

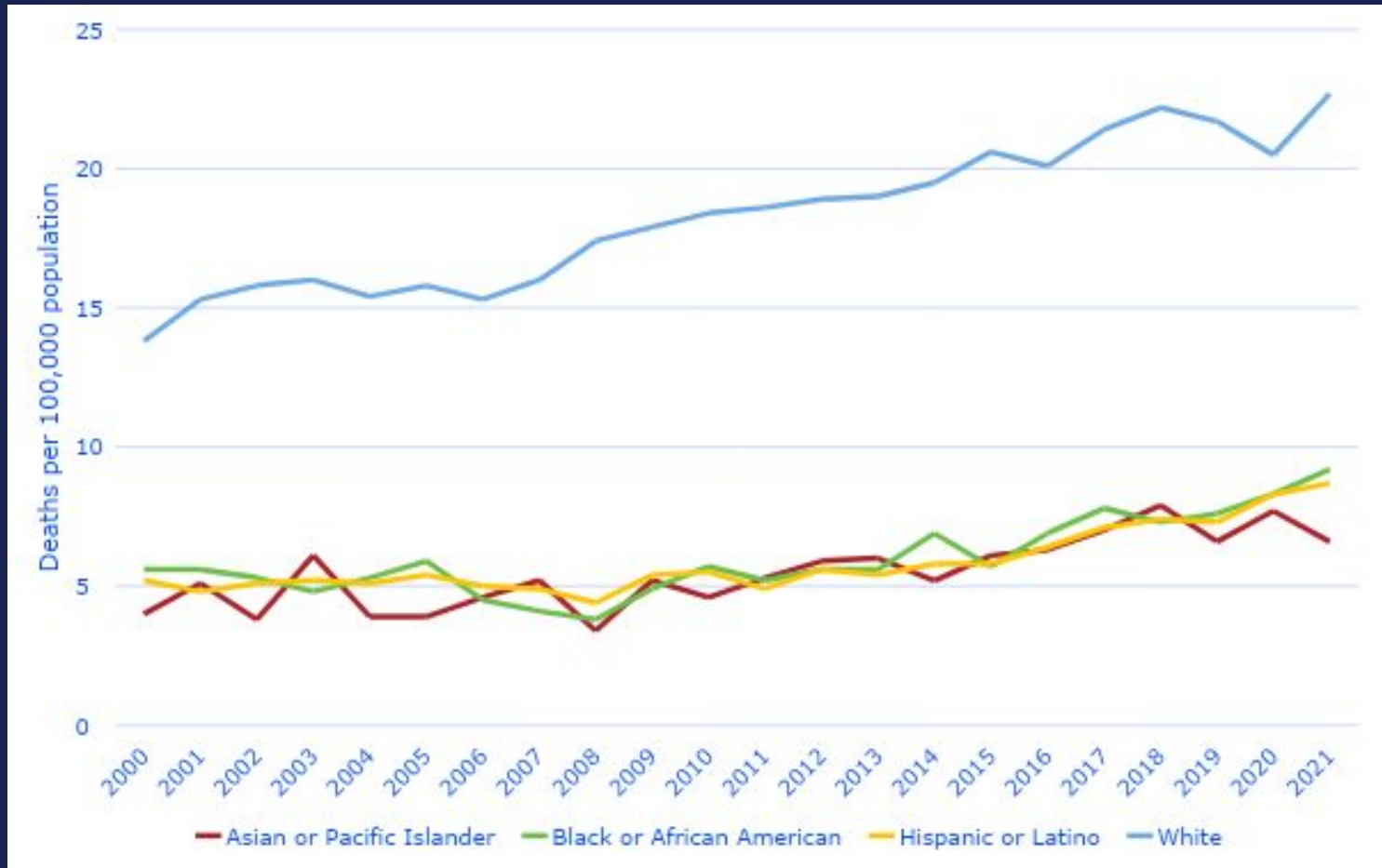


Source: CDC WONDER

Texas Suicide Mortality by Race and Ethnicity, 2000-2021



TEXAS
Health and Human
Services



Source: CDC WONDER

Hospitalizations for Suicide Attempt

Texas Health Care Information Collection (THCIC) at the Texas Department of State Health Services (DSHS)

- Data available quarterly, nine months after the end of the quarter.
- Overall Texas rates of both inpatient hospitalizations and outpatient emergency department (ED) hospitalizations.
- ED visits that resulted in admission to the hospital not included in ED numbers.
- Suppression complicates and biases analysis by many variables.

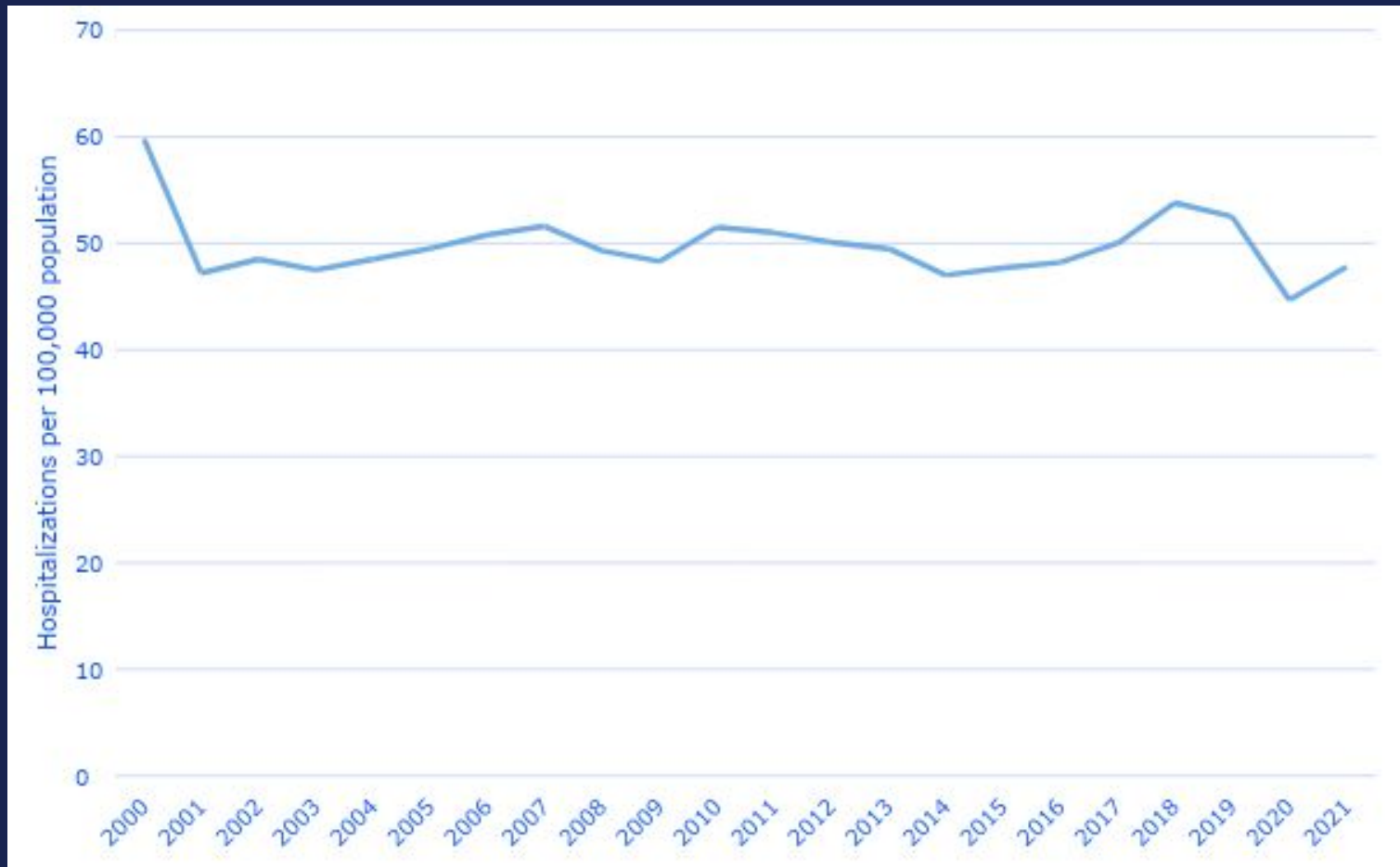


TEXAS
Health and Human
Services

Texas Inpatient Hospitalizations for Suicide Attempt, 2000-2021



TEXAS
Health and Human
Services



Source: Texas Health Care Information Collection, DSHS

Texas Emergency Department Outpatient Hospitalizations for Suicide Attempt, 2016-2021



TEXAS
Health and Human
Services

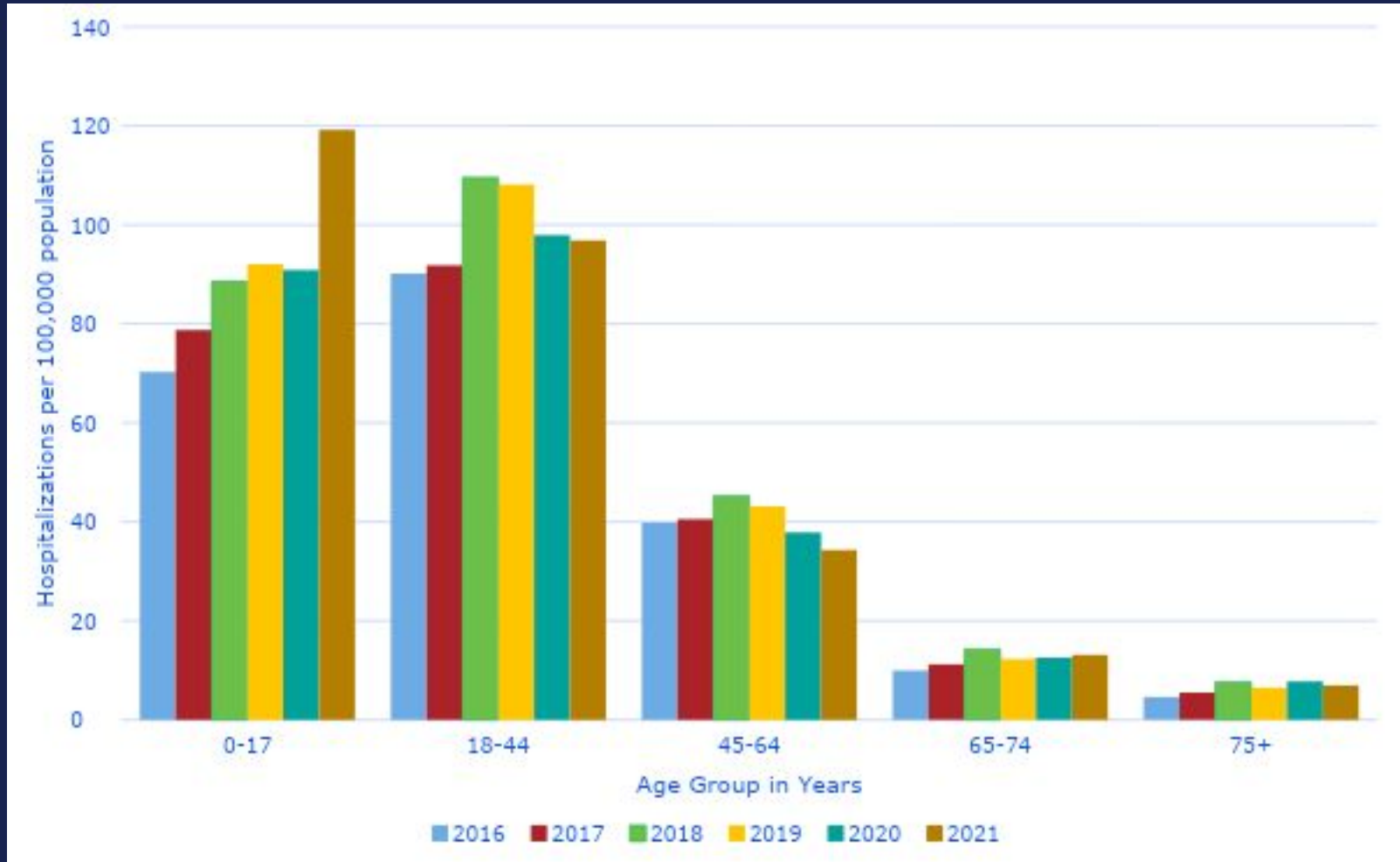


Source: Texas Health Care Information Collection, DSHS

Texas Emergency Department Outpatient Hospitalizations for Suicide Attempt by Age Group



TEXAS
Health and Human
Services



Source: Texas Health Care Information Collection, DSHS

Suspected Suicide Attempt Calls to Poison Control

Texas Poison Control Network (TPCN) at DSHS

- Data available in real time.
- Calls received from EMS, emergency departments, doctor's offices, and general public.
- Calls are coded by location of call, not residence of subject, so local rates are not possible.
- Looked at calls concerning 13–to 19-year-olds and 6–to 12-year-olds by sex.

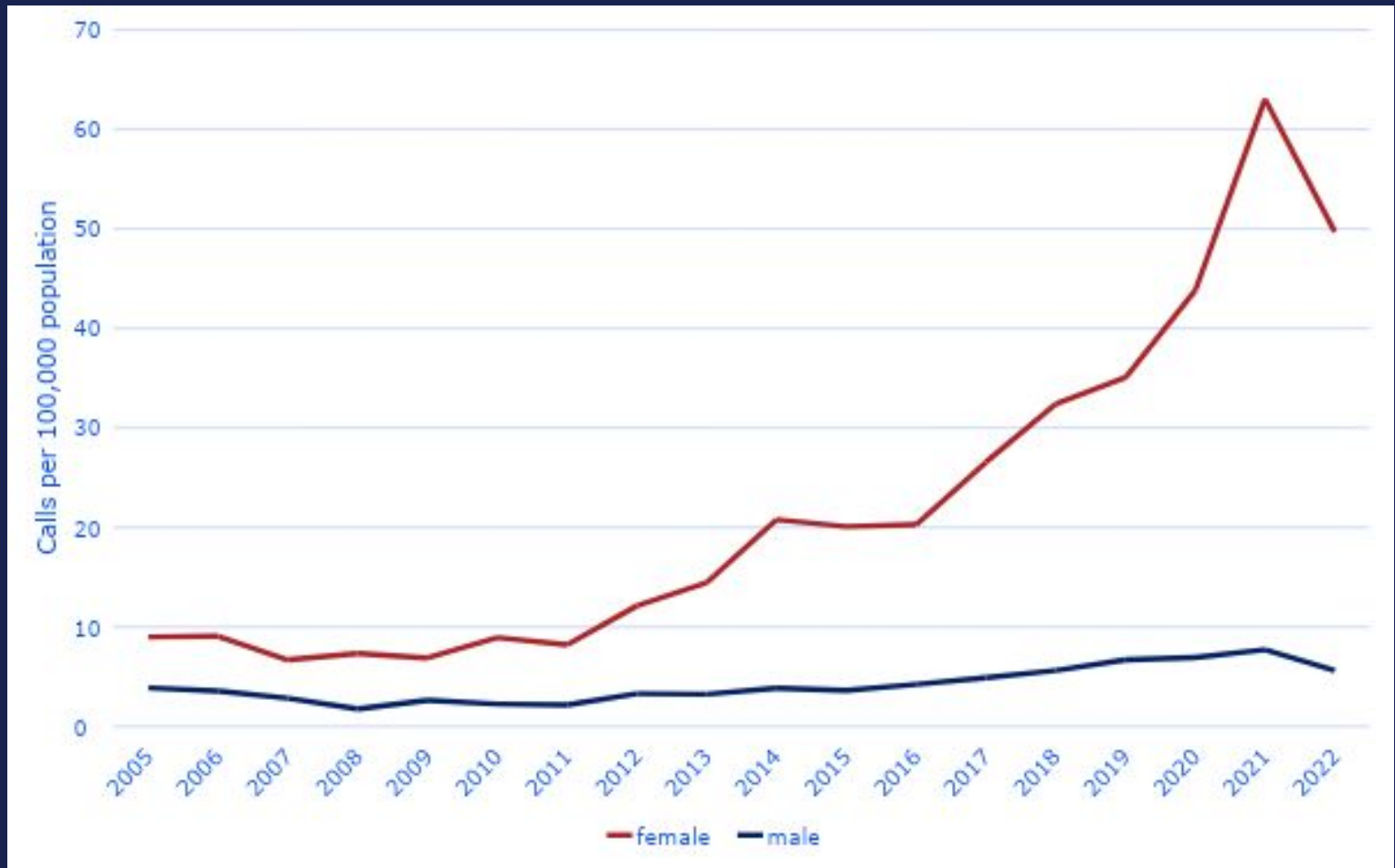


TEXAS
Health and Human
Services

Suspected Suicide Calls to Texas Poison Control Network Concerning 6- to 12-year-olds, 2010-2022



TEXAS
Health and Human
Services

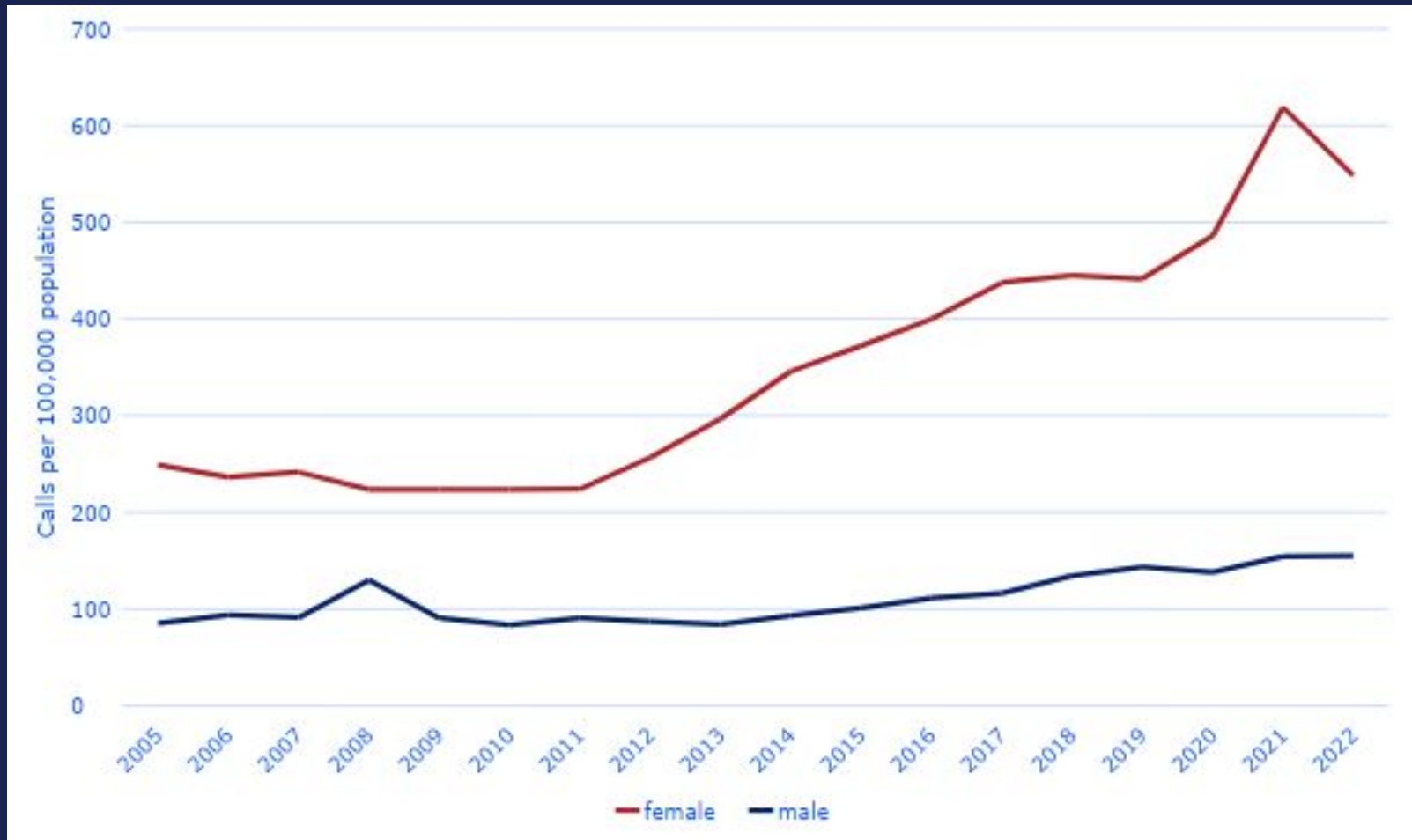


Source: Texas Poison Control Network, DSHS

Suspected Suicide Calls to Texas Poison Control Network Concerning 13- to 19-year-olds, 2010-2022



TEXAS
Health and Human
Services

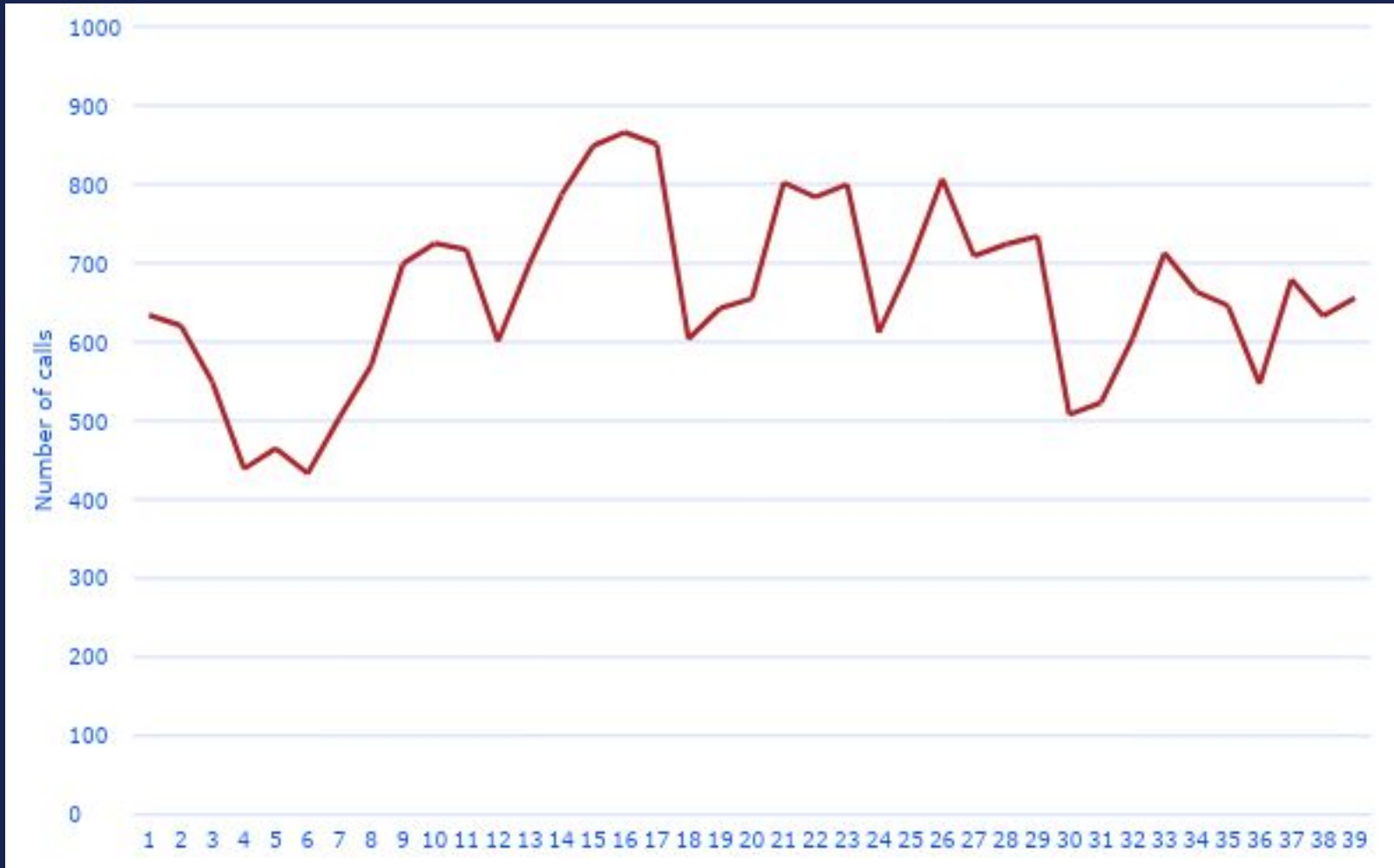


Source: Texas Poison Control Network, DSHS

suspected suicide Calls to Texas Poison Control Network Concerning 13- to 19-year-olds Females by Month, 2020-2023*



TEXAS
Health and Human
Services



Source: Texas Poison Control Network, DSHS

Suicide in Texas High School Students

Youth Risk Behavior Survey (YRBS) at DSHS

- Biennial survey with data available about five months after survey administration ends.
- Random sample of classrooms in a random sample of Texas high schools.
- Monitors behaviors that increase risk for the leading causes of morbidity and mortality in adolescence and adulthood.
- Five questions concerning suicidal behavior.
- Because of sampling methodology, it cannot be broken down geographically.

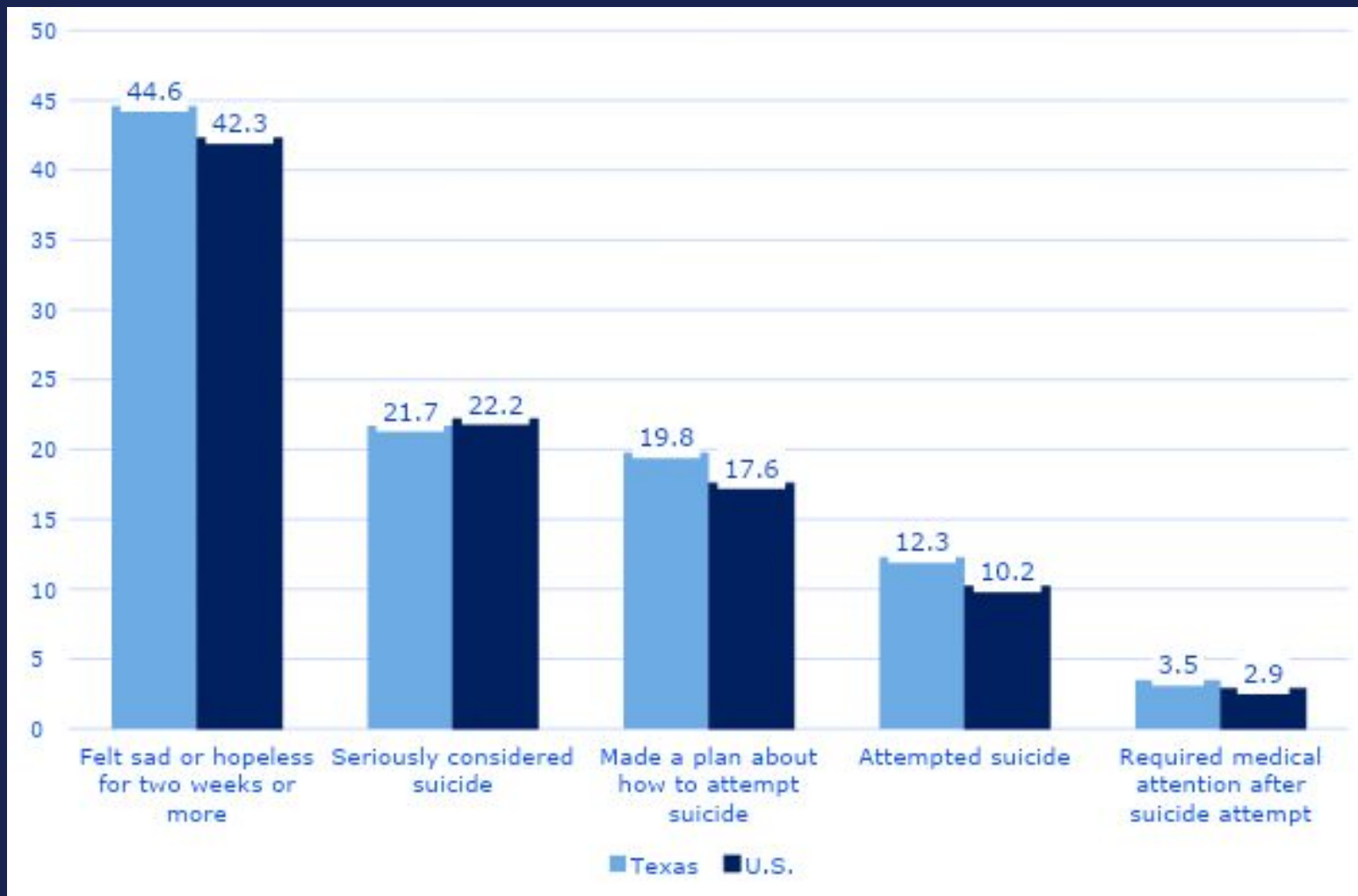


TEXAS
Health and Human
Services

High School Students Mental Health Measures, Texas and the U.S. in 2021



TEXAS
Health and Human
Services

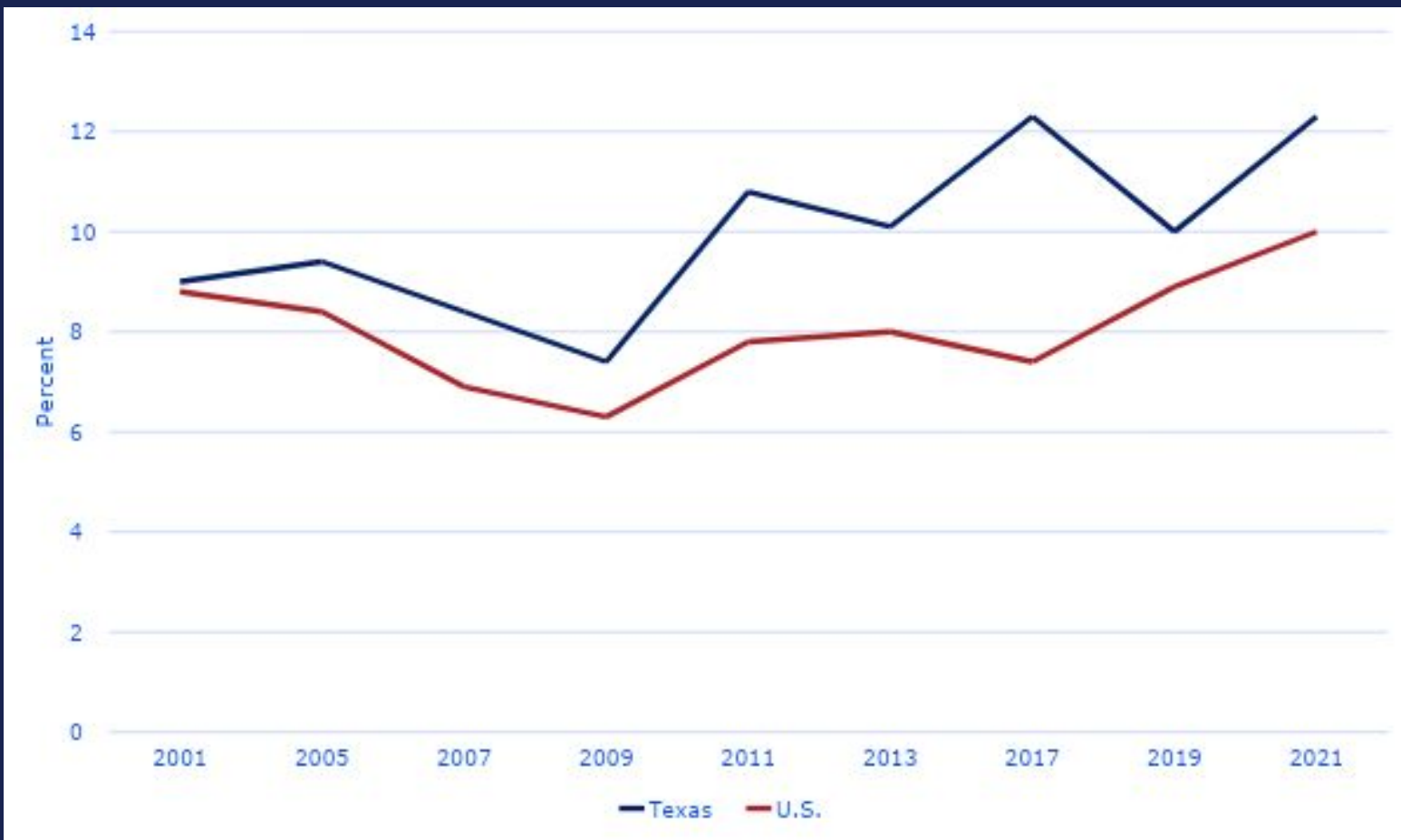


Source: National and Texas Youth Risk Behavior Surveys, CDC & DSHS

High School Students who Attempted Suicide in the Past 12 Months, Texas and the U.S.



TEXAS
Health and Human
Services

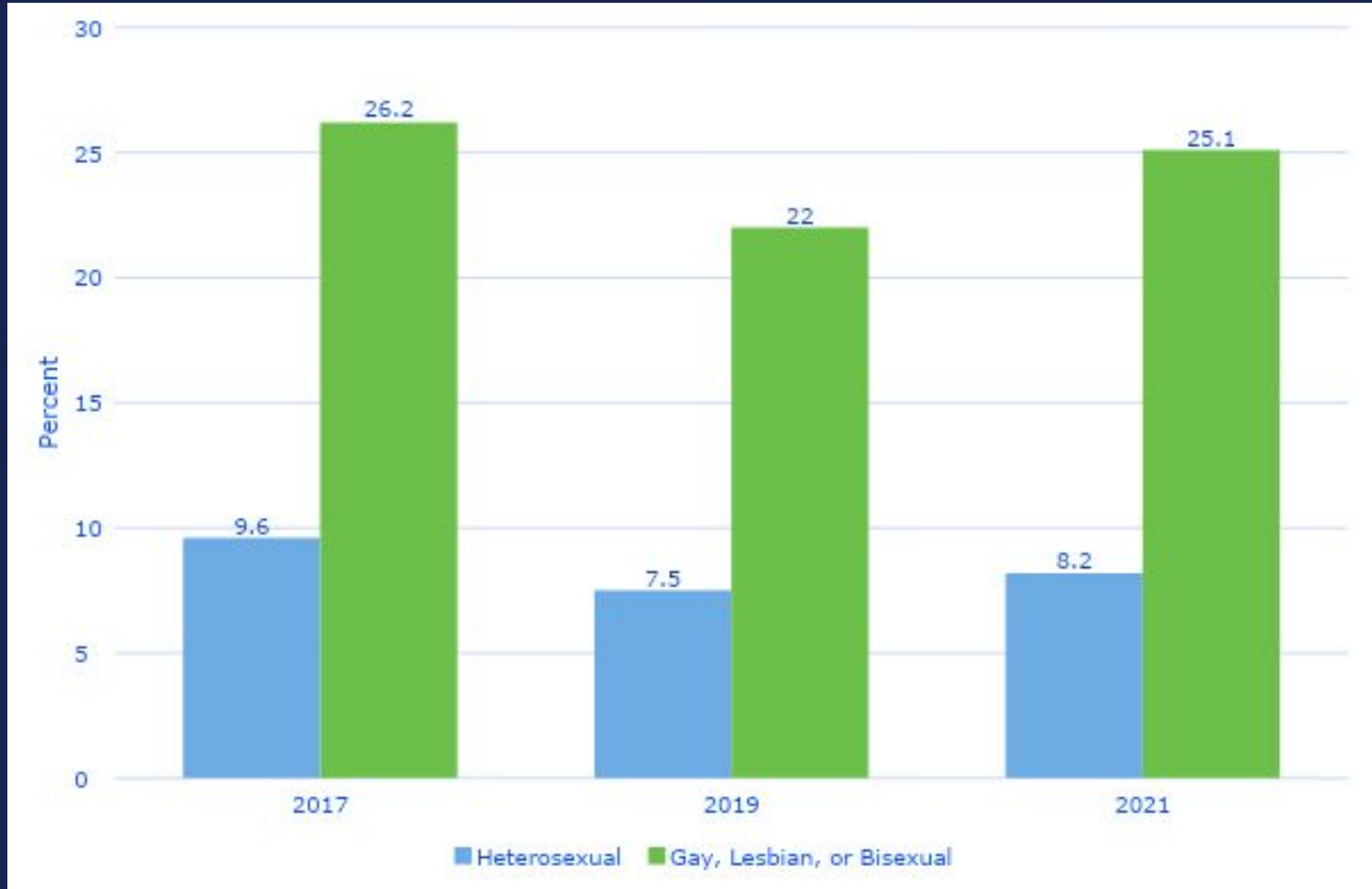


Source: National and Texas Youth Risk Behavior Surveys, CDC & DSHS

Texas High School Students who Attempted Suicide in the Past 12 Months by Self-Identified Sexual Orientation



TEXAS
Health and Human
Services



Source: Texas Youth Risk Behavior Survey, DSHS

Behavioral Risk Factor Surveillance System

Data available for combined rates 2016-2018

- Suicidal ideation data.
- Data analyzed by age and disability status.
- Relatively low prevalence did not allow for analysis by location, veteran status, gender identity, or suicide attempt.

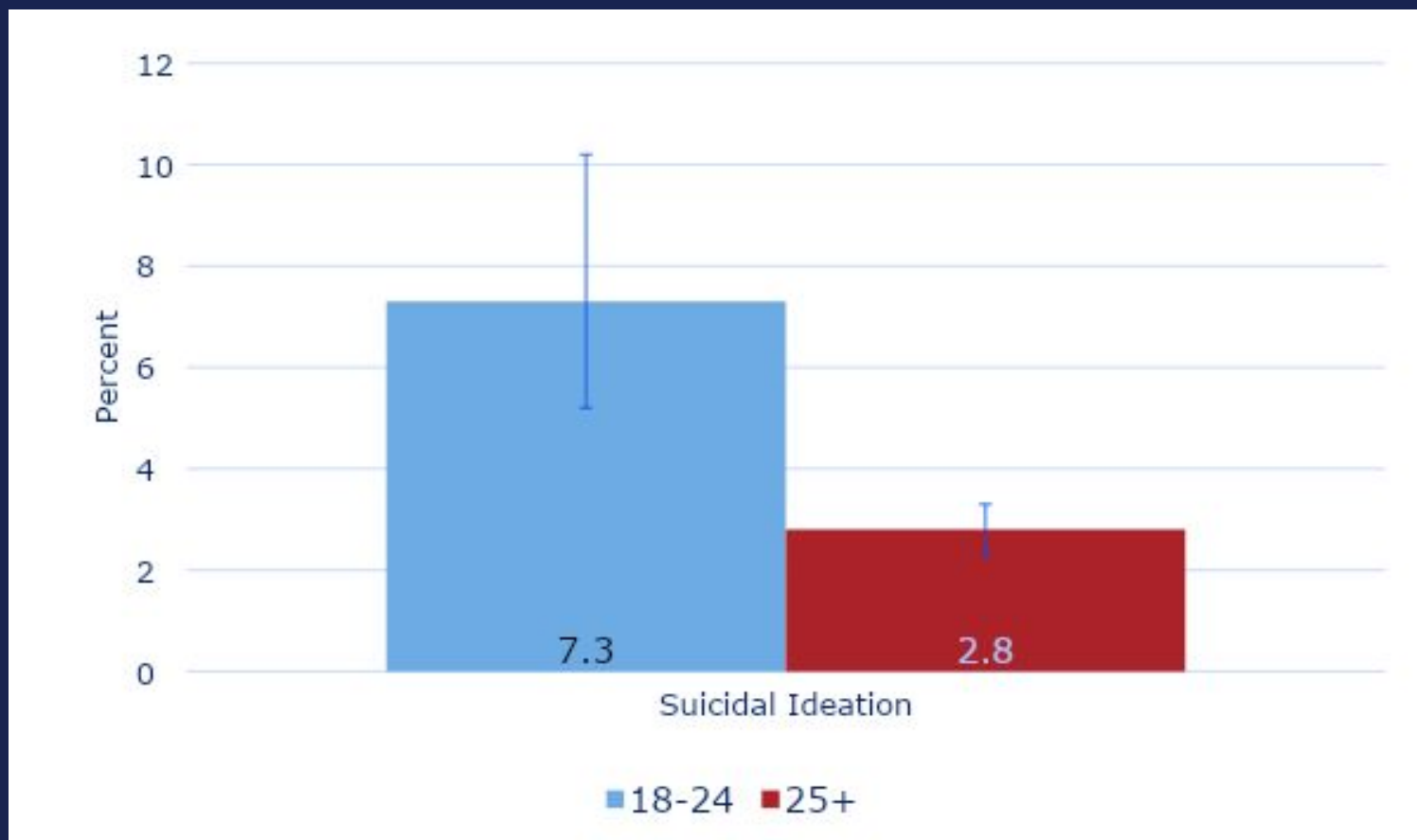


TEXAS
Health and Human
Services

Suicidal Ideation by Young Adult and Adult in Texas, combined 2016-2018



TEXAS
Health and Human
Services

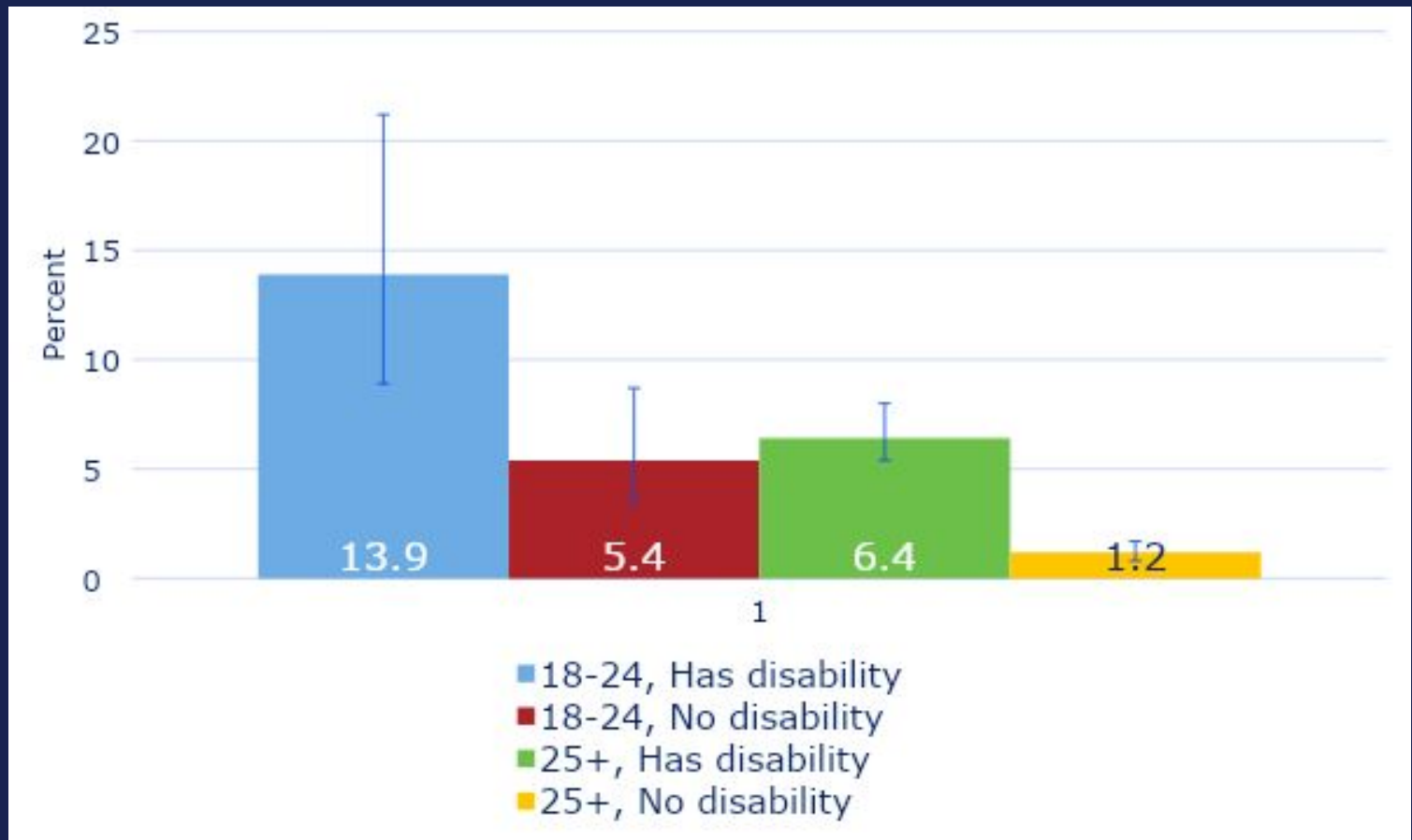


Source: Texas Behavioral Risk Factor Surveillance System (BRFSS) at DSHS Combined 2016-2018 data

Suicidal Ideation by Age Group and Disability Status in Texas combined 2016-2018



TEXAS
Health and Human
Services



Source: Texas Behavioral Risk Factor Surveillance System (BRFSS) at DSHS Combined 2016-2018 data

Summary for Q&A



TEXAS
Health and Human
Services

- Data interpretation is improved with a few key concepts.
- Suicide rates are rising in Texas.
- The pandemic had a detrimental effect on the mental health of some of our most vulnerable populations.



Questions?



TEXAS
Health and Human
Services

Thank You

Jennifer Haussler Garing
State Suicide Prevention Epidemiologist
Jennifer.HausslerGaring@hhs.Texas.gov