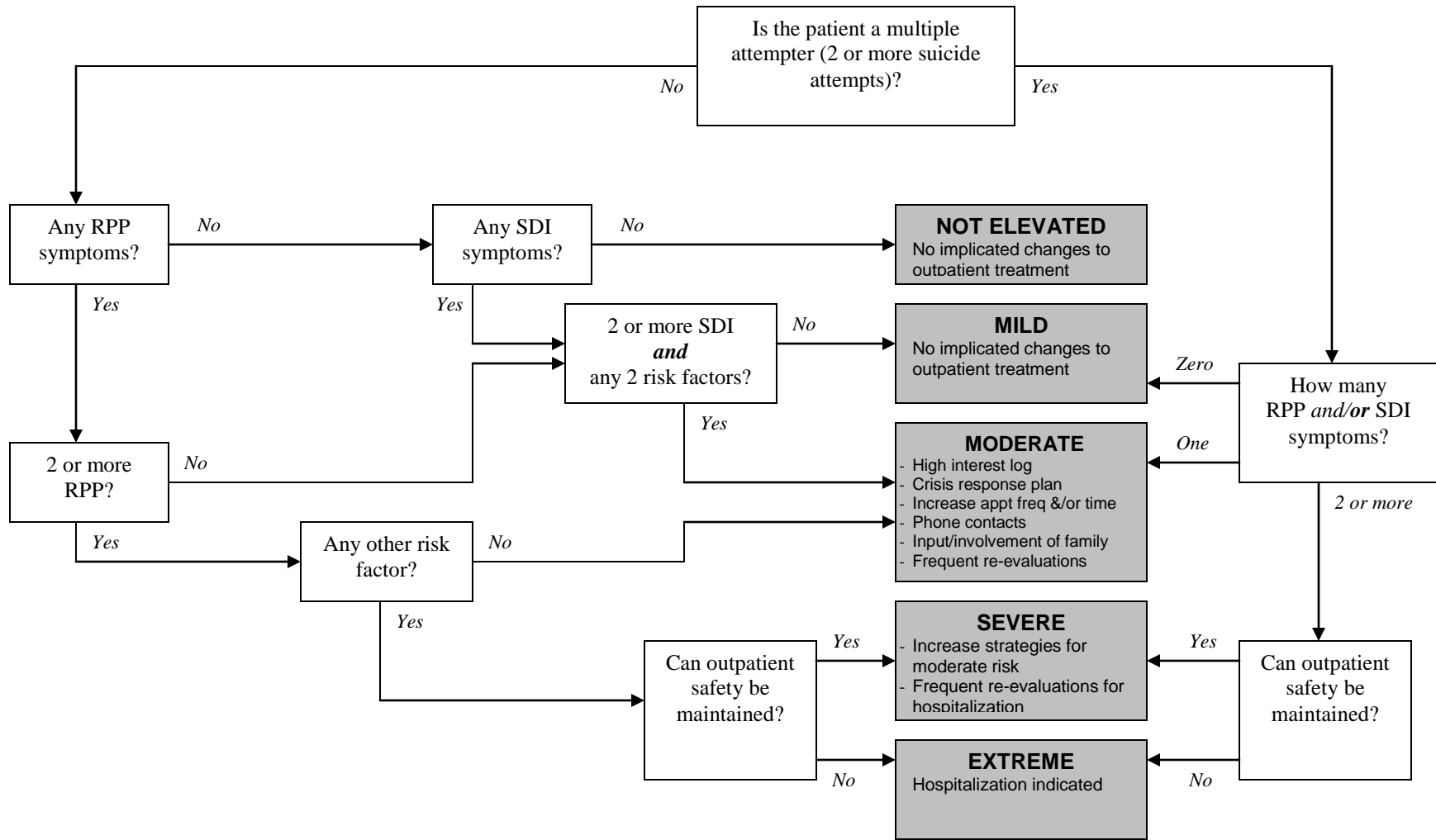


SUICIDE RISK LEVEL DECISION TREE



References:

Bryan, C.J., & Rudd, M.D. (2006). Advances in the assessment of suicide risk. *Journal of Clinical Psychology: In Session*, 62, 185-200.

Joiner, T.E., Walker, R.L., Rudd, M.D., & Jobes, D.A. (1999). Scientizing and routinizing the assessment of suicidality in outpatient practice. *Professional Psychology: Research and Practice*, 30, 447-453.

Rudd, M.D., Joiner, T.E., & Rajab, M.H. (2001). *Treating Suicidal Behavior: An Effective, Time-Limited Approach*. New York: The Guilford Press.

Jobes, D.A. (2006). *Managing Suicidal Risk: A Collaborative Approach*. New York: The Guilford Press.